

BEDROOM
12' x 10'

BATHROOM
7'6" x 6'

BEDROOM
12'x12'

**WALK IN
CLOSET**

BATHROOM
6' x 6'6"

LIVING ROOM

PORCH

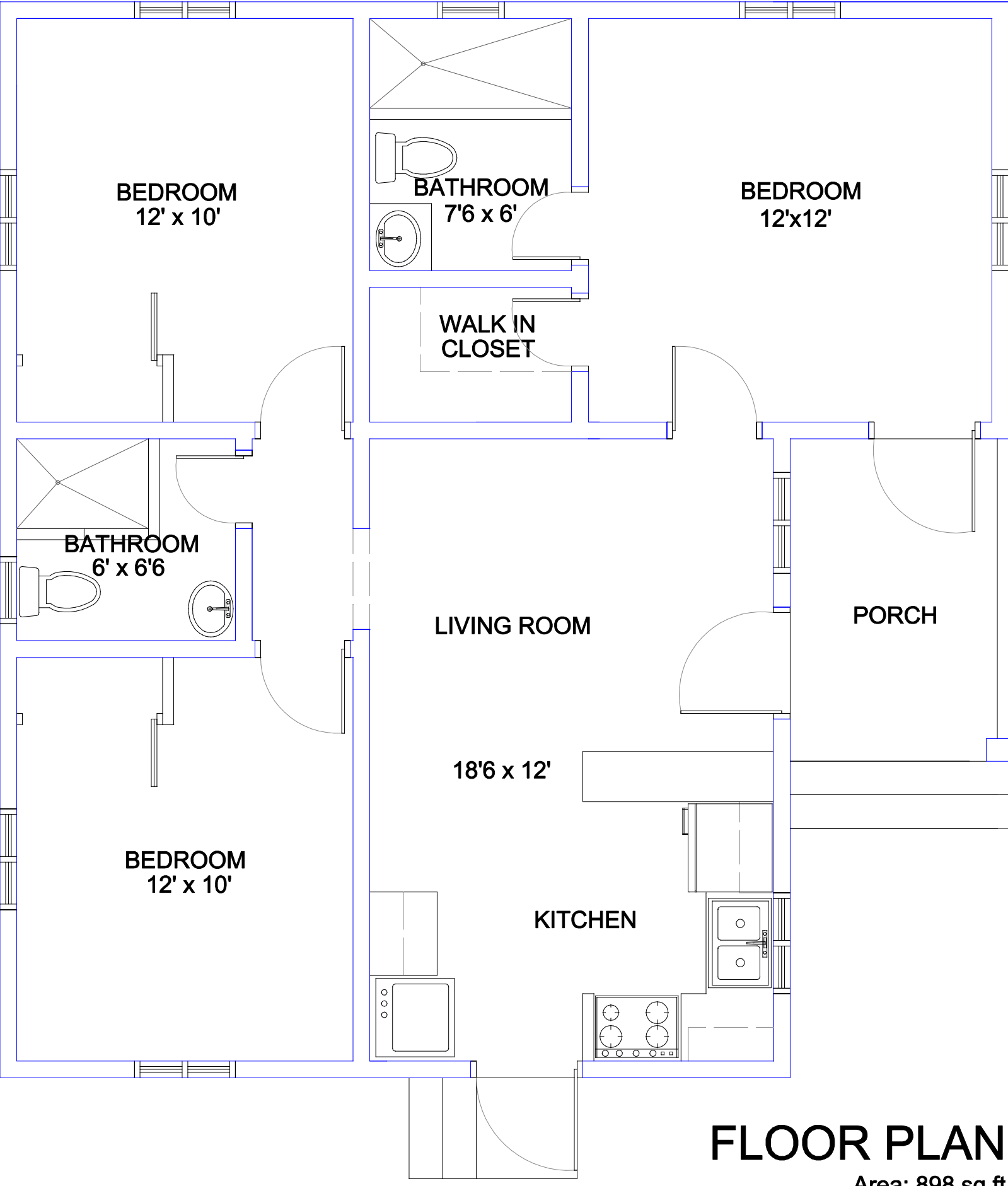
18'6" x 12'

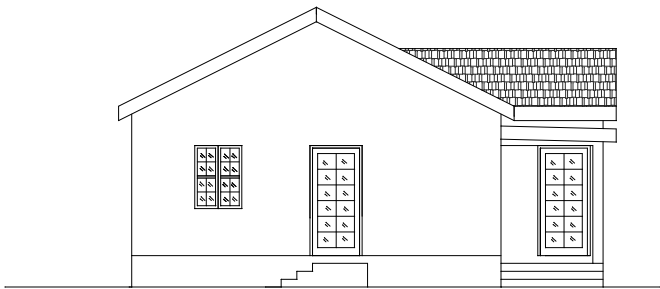
BEDROOM
12' x 10'

KITCHEN

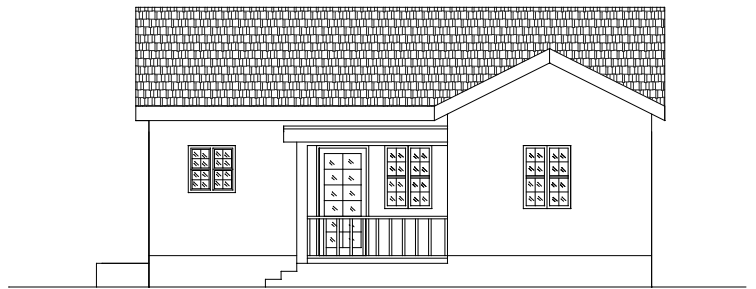
FLOOR PLAN

Area: 898 sq ft

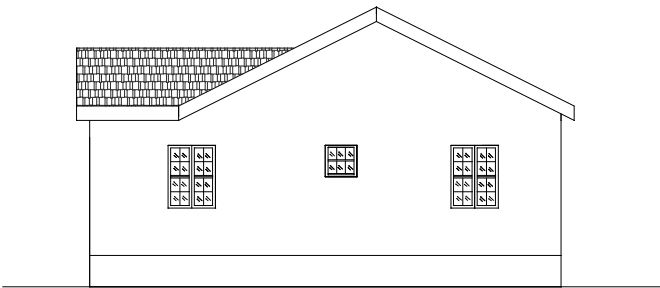




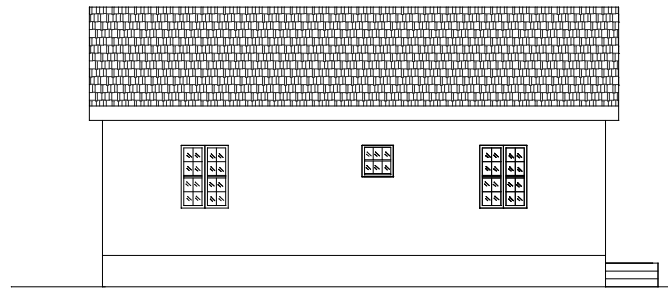
SIDE ELEVATION



FRONT ELEVATION



SIDE ELEVATION



BACK ELEVATION