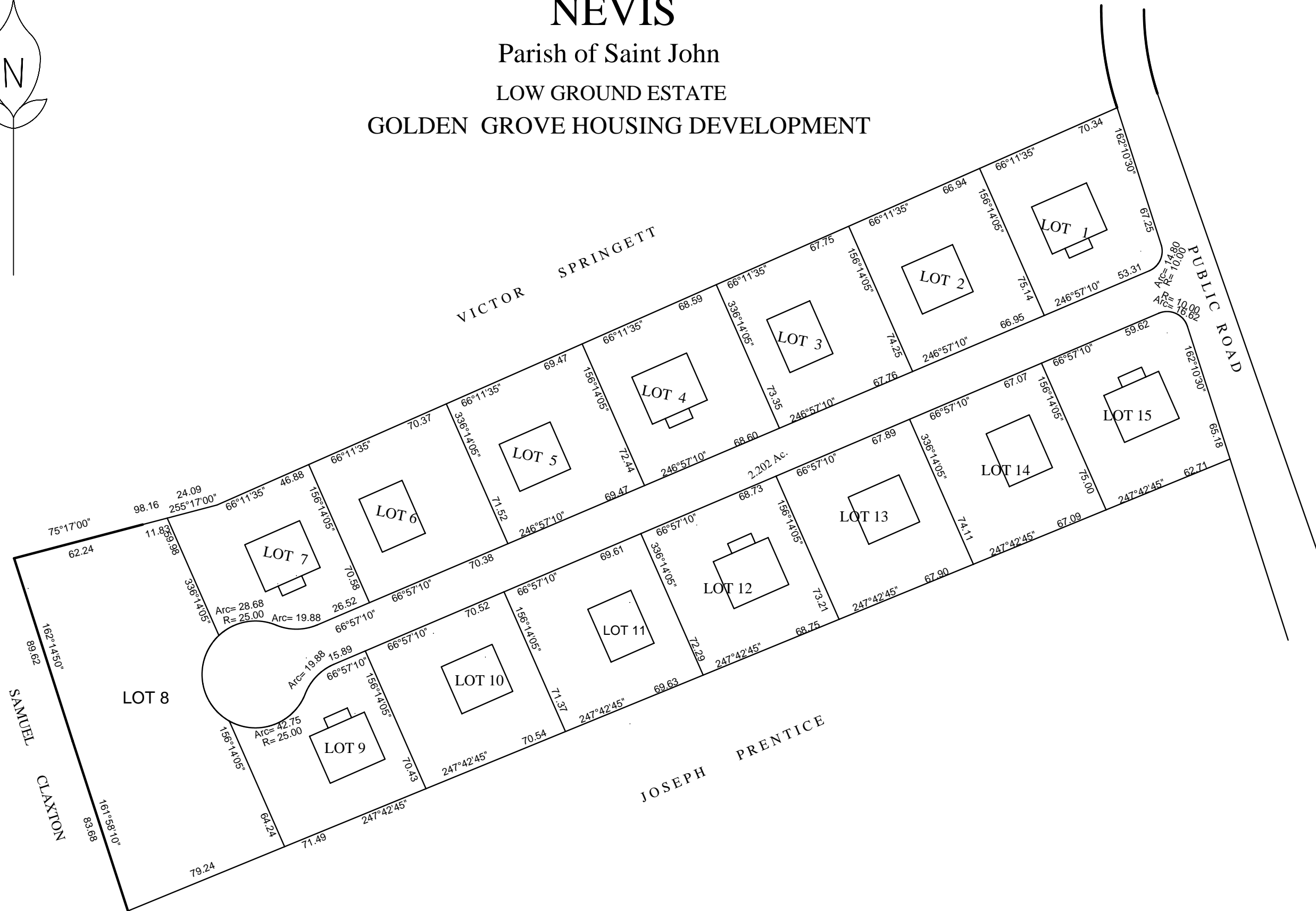


NEVIS
Parish of Saint John
LOW GROUND ESTATE
GOLDEN GROVE HOUSING DEVELOPMENT



REQUESTED BY: N.H.L.D.C.

Job No. 19-2006A	Dwg No. 1906	Hills Surveys & Mapping P.O. BOX 927, Charlestown, Nevis West Indies Tel: (869) 469-7376 Fax: (869) 469-7176
---------------------	-----------------	--

Licensed Land Surveyor
Date: January 11, 2007.

Note: Not drawn to Scale.