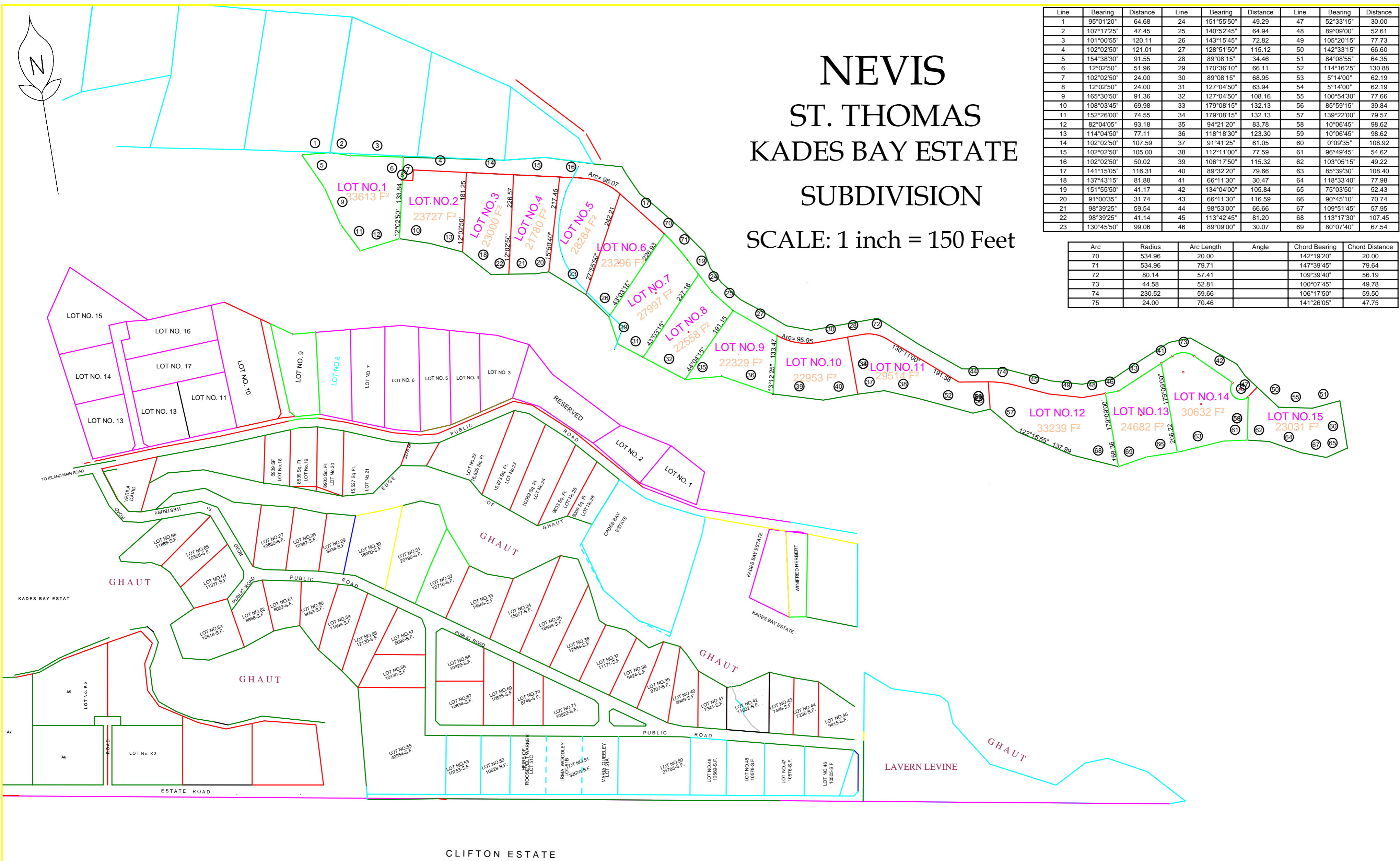


# NEVIS ST. THOMAS KADES BAY ESTATE SUBDIVISION SCALE: 1 inch = 150 Feet

Line	Bearing	Distance	Line	Bearing	Distance	Line	Bearing	Distance
1	95°01'20"	64.68	24	151°55'50"	49.29	47	52°33'15"	30.00
2	107°17'25"	47.45	25	140°52'45"	64.94	48	89°09'00"	52.61
3	101°00'55"	120.11	26	143°15'45"	72.82	49	105°20'15"	77.73
4	102°02'50"	121.01	27	128°51'50"	115.12	50	142°33'15"	66.60
5	154°38'30"	91.55	28	89°08'15"	34.46	51	84°08'55"	64.35
6	12°02'50"	51.96	29	170°36'10"	66.11	52	114°16'25"	130.88
7	102°02'50"	24.00	30	89°08'15"	68.95	53	5°14'00"	62.19
8	12°02'50"	24.00	31	127°04'50"	63.94	54	5°14'00"	62.19
9	165°30'50"	91.36	32	127°04'50"	108.16	55	100°54'30"	77.66
10	108°03'45"	69.98	33	179°08'15"	132.13	56	85°59'15"	39.84
11	152°26'00"	74.55	34	179°08'15"	132.13	57	139°22'00"	79.57
12	82°04'05"	93.18	35	94°21'20"	83.78	58	10°06'45"	98.62
13	114°04'50"	77.11	36	118°18'30"	123.30	59	10°06'45"	98.62
14	102°02'50"	107.59	37	91°41'25"	61.05	60	0°09'35"	108.92
15	102°02'50"	105.00	38	112°11'00"	77.59	61	96°49'45"	54.62
16	102°02'50"	50.02	39	106°17'50"	115.32	62	103°05'15"	49.22
17	141°15'05"	116.31	40	89°32'20"	79.66	63	85°39'30"	108.40
18	137°43'15"	81.88	41	66°11'30"	30.47	64	118°33'40"	77.98
19	151°55'50"	41.17	42	134°04'00"	105.84	65	75°03'50"	52.43
20	91°00'35"	31.74	43	66°11'30"	116.59	66	90°45'10"	70.74
21	98°39'25"	59.54	44	98°53'00"	66.66	67	109°51'45"	57.95
22	98°39'25"	41.14	45	113°42'45"	81.20	68	113°17'30"	107.45
23	130°45'50"	99.06	46	89°09'00"	30.07	69	80°07'40"	67.54

Arc	Radius	Arc Length	Angle	Chord Bearing	Chord Distance
70	534.96	20.00		142°19'20"	20.00
71	534.96	79.71		147°39'45"	79.64
72	80.14	57.41		109°39'40"	56.19
73	44.58	52.81		100°07'45"	49.78
74	230.52	59.66		106°17'50"	59.50
75	24.00	70.46		141°26'05"	47.75



———— UNSURFACED ROAD LENGTH = 2220 FEET